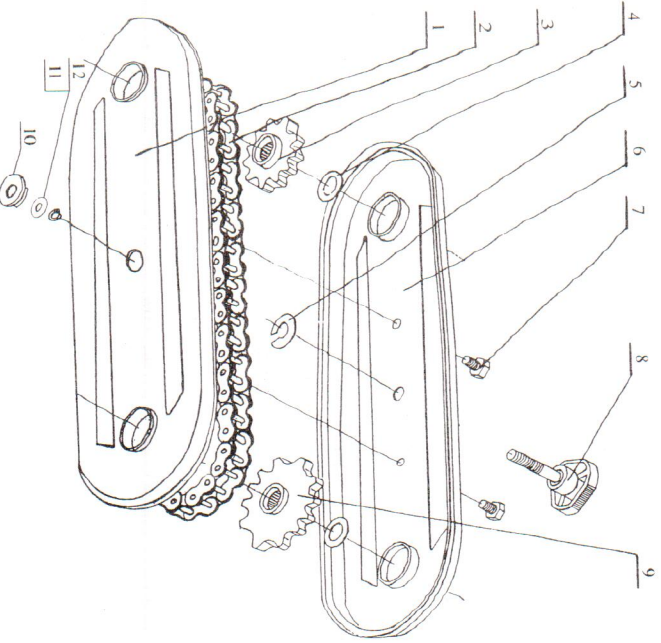


CONTENTS

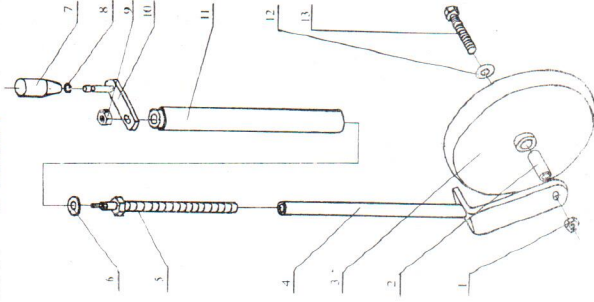
10. Unit of driving chain of output shaft 6-77001

No. code	Name	quantity
1 6-77011	Welded parts between back cover of chain box and supporting frame	1
2 GB1243.1-83	Chain 10A-1 × 56	1
3 6-77101	Small chain wheel	1
4 6-77-104	Limit gasket	2
5 GB896-86	Split retainer 9	1
6 6-77011	Welded parts of outer cover	1
7 GB5787-86	Bolt M8 × 12	2
8 6-77102	Connecting bolt	1
9 6-77103	Big chain wheel	1
10 6.77.013	Assemble of hand wheel	1
11 GB97.2-85	Washer 12	1
12 GB93-87	Washer 12	1



1 Unit of resistant force bar with L triangle adjusting block 6-73A.001.....	1
2 Unit of banking machine 6-89.001.....	2
3 Unit of land wheel 6-80-001.....	4
4 Unit of knife of rotary cultivation for left and right ditching 6-81.001.....	5
5 Unit of plough with grid 6-88.001.....	6
6 Unit of plough for deep rotary cultivation 6-76001.....	8
7 Unit of hoe with hexagram cylinder for rotary cultivation 6-72A.001.....	10
8 Unit of rotary cultivation tractor 6-72001.....	12
(1) Assemble parts of knife for left and right rotary cultivation 6-72011.....	14
(2) Assemble parts of flexible shaft for rotary cultivation tractor 6-72015.....	15
(3) Assemble parts of fixed fender 6-72021	
Assemble parts of back rubble fender 6-72023.....	16
(4) Assemble of gearbox 6-72016.....	18
(5) Assemble of left movable fender 6-72012	
Assemble of right movable fender 6-72022.....	20
9 Unit of tail wheel 6-33001.....	21
10 Unit of driving chain of output shaft 6-77001.....	22

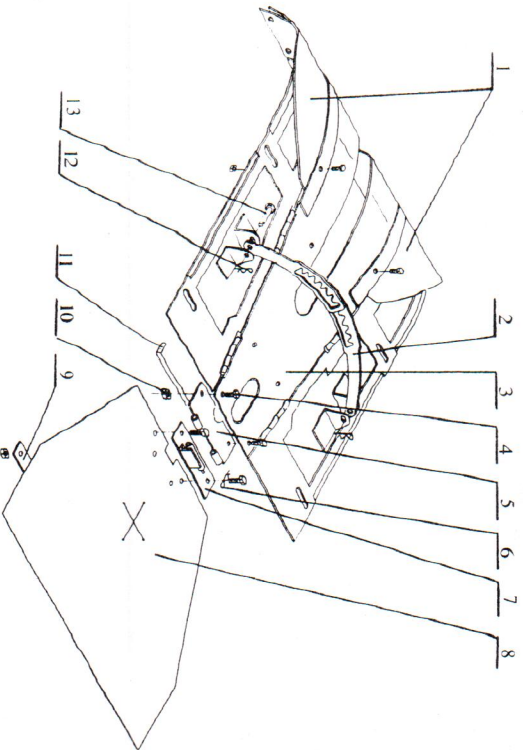
9. Unit of tail wheel 6-33001



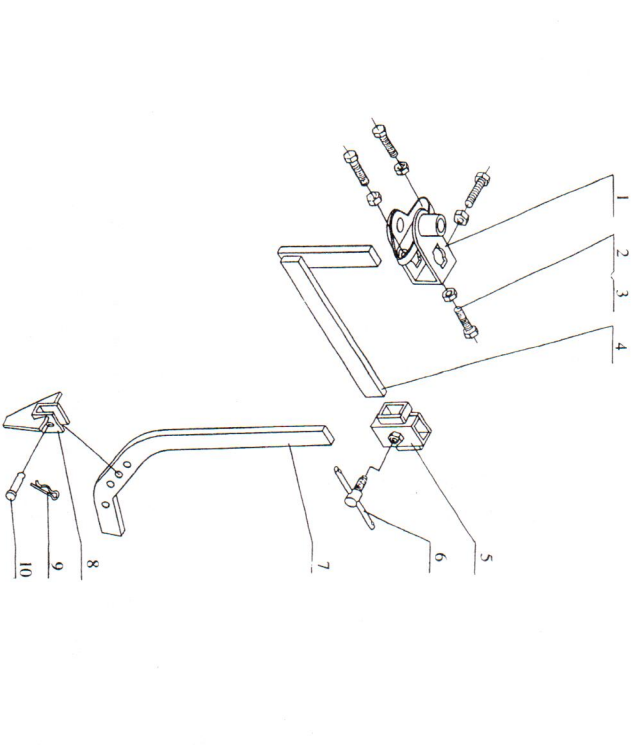
No.	code	Name	quantity
1	GB6171-86	Nut M10 × 1.25	1
2	6-33101	Core shaft of tail wheel	1
3	6-33011	Assemble of tail wheel	1
4	6.33-012	Welded parts of tail wheel support	1
5	6-33013	Welded parts of screw	1
6	GB93-87	Washer 12	1
7	6-33012	Welded parts of outer sheath	1
8	6-33014	Welded parts of crank	1
9	GB6187-86	Nut M8	1
10	6-33103	Tensile spring ring	1
11	6-33102	Handle of crank	1
12	GB2587-85	Washer 10	1
13	GB5787-86	Bolt M10 × 1.25 × 70	1

(5) Assemble of left movable fender
 Assemble of right movable fender

No.	code	Name	quantity
1	6-72021-101	Rubber baffle (middle)	2
2	6-72021-104	Adjusting plate	2
3	6-72.021.03	Welded parts of fender	1
4	GB5783-86	Screw M6 × 12	8
5	6-72023.01	Welded parts of linker (I)	1
6	6-72023-102	Elastic pin	1
7	6-72023.02	Welded parts of linker (II)	1
8	6-72023-101	Rubber plate	1
9	6-72023-104	Supporting gasket	1
10	GB6177-86	Hexagram nut M6	8
11	6-72023-103	Pin shaft of linker	1
12	6-72021-103	Elastic pin	2
13	GB882-86	Pin shaft B8 × 30	2



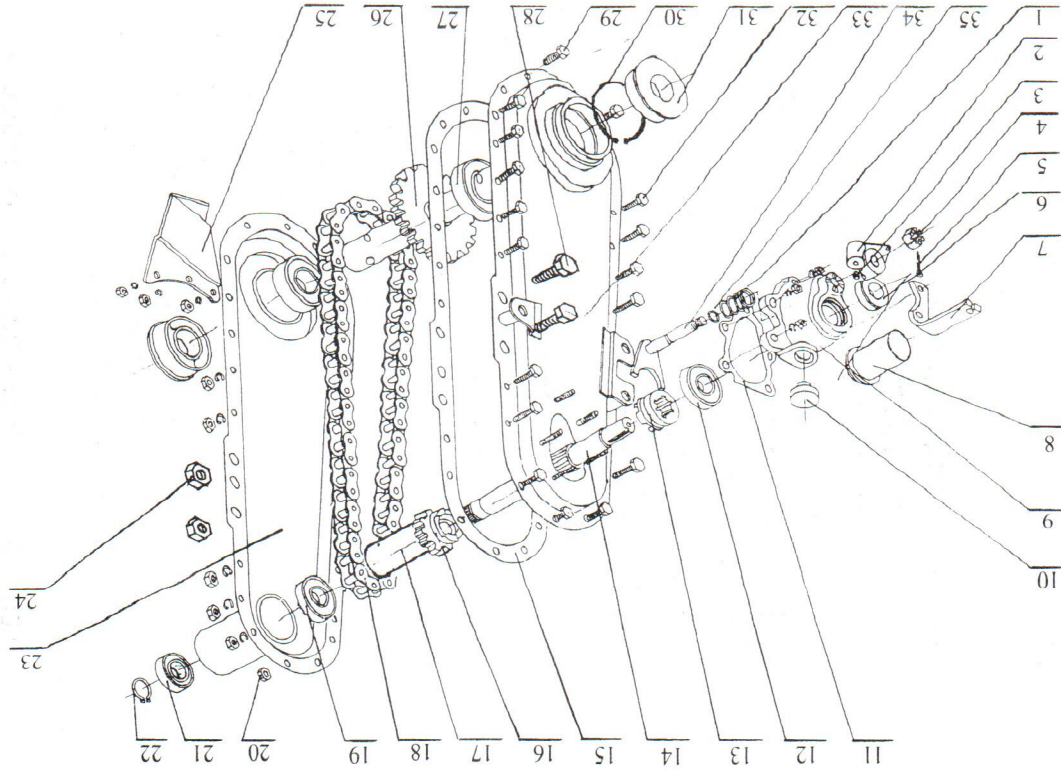
1. Unit of resistant force bar with L triangle adjusting block 6.73A.001



No.	code	Name	quantity
1	6-73A.012	Assemble of hanging and connecting frame	1
2	GB5783-86	Bolt M12 × 45	4
3	GB6170-86	Nut M12	4
4	6-73A.011	Assemble of connecting lever	1
5	6-73A.013	Assemble of connecting frame for supporting	1
6	6-73A.014	Assemble of fixed screw	1
7	6-73A.101	Supporting lever	1
8	6-73A.015	Assemble of resistant force adjusting block	1
9	6-34.103	Elastic split pin	1
10	GB882-86	Pin shaft B10 × 35	1

2. Unit of banking machine 6.89.001

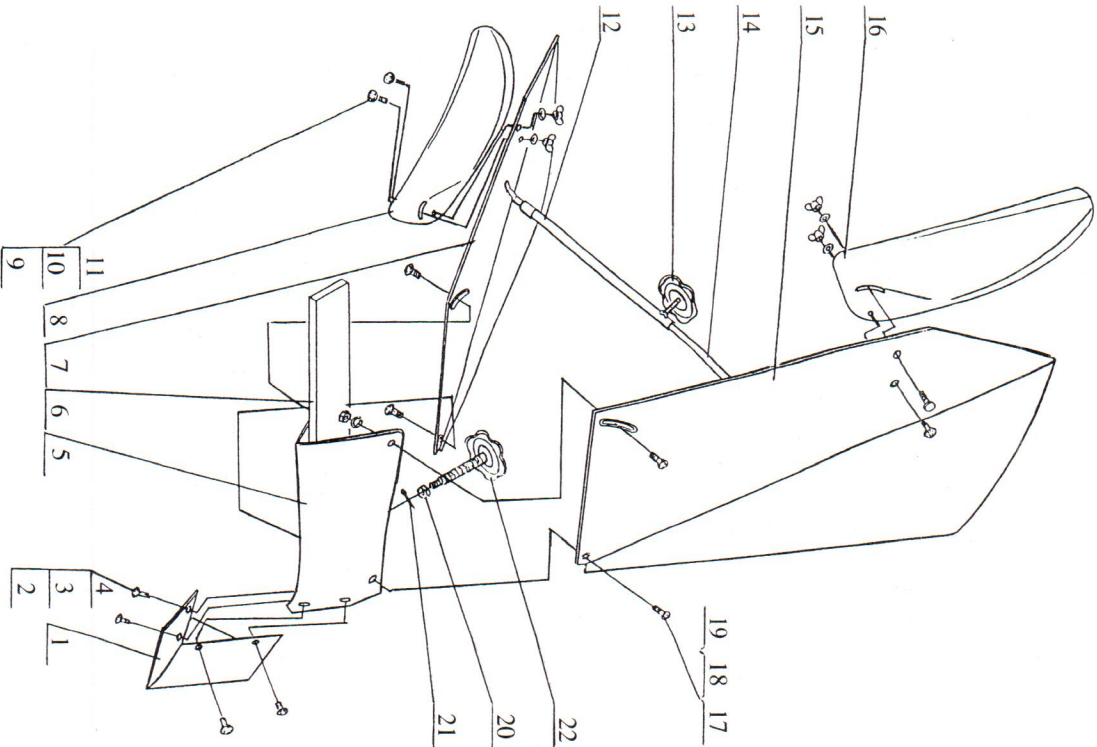
No.	code	Name	quantity
1	6-89011	Welded parts of spade	1
2	GB819-85	Counter sunk screw M6 × 10	4
3	GB6170-86	Nut M6	4
4	GB93-87	Washer 6	4
5	6-89.012	Part of spade chest	1
6	6-89.051	Welded parts of swing lever	1
7	6-89.013	Welded parts of right hilling plate	1
8	6-89.101	Extension plate of right hilling up	1
9	GB818-85	Pan-head screw M6 × 20	4
10	GB97.2-85	washer 6	4
11	GB62-88	butterfly nut M6	4
12	6-89.054	Right hilling supporting lever	1
13	6-89.015	Welded parts of adjusting screw	1
14	6-89.055	Supporting lever of left hilling	1
15	6-89.014	Welded parts of left hilling plate	1
16	6-89.102	Extension plate for left hilling plate	1
17	GB819-85	Counter sunk screw M8 × 20	4
18	GB6170-86	Nut M8	4
19	GB93-87	washer 8	4
20	6-89.012-102	Limit screw	1
21	GB91-86	Split pin 2 × 18	1
22	6-89053	Welded parts of adjusting screw	1



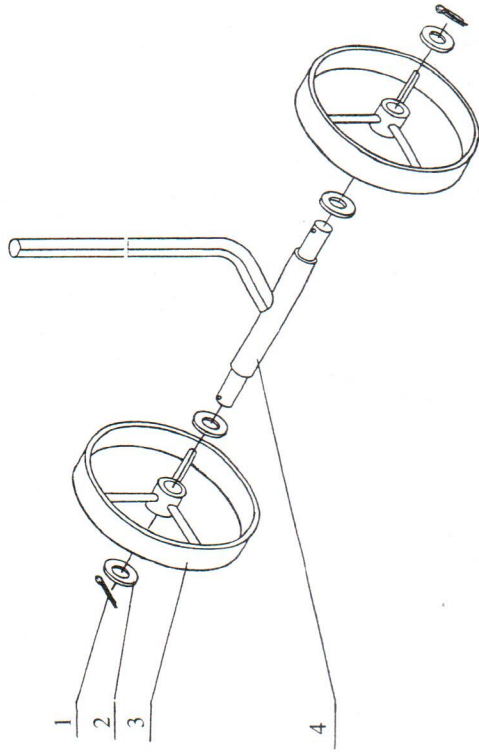
(4) Assemble of gearbox

6-72016

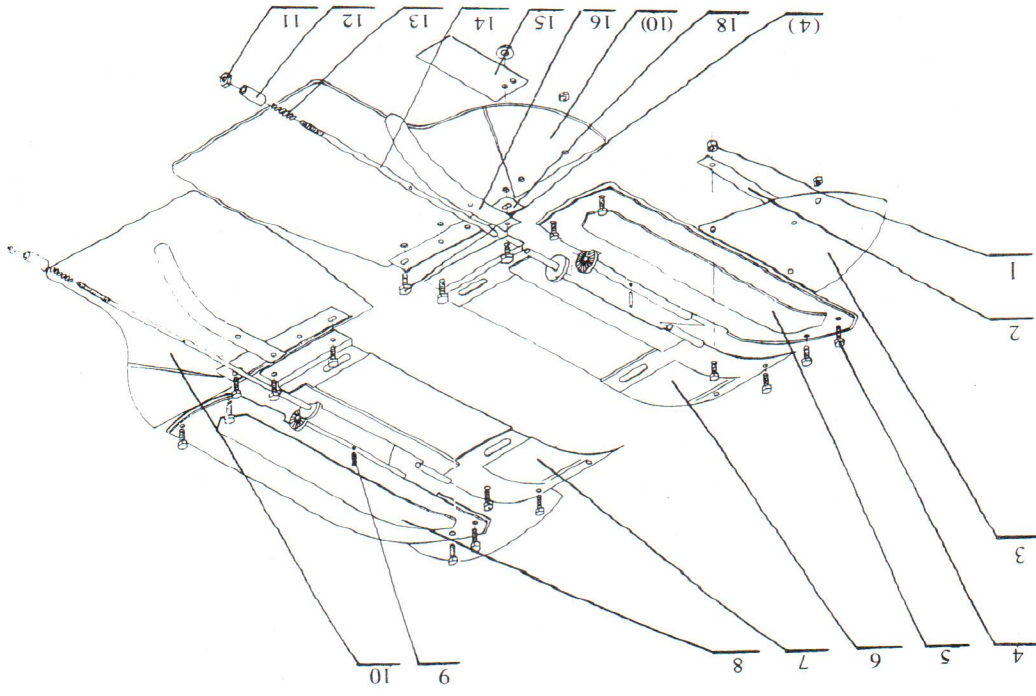
No.	code	Name	quantity
1	6-72016-103	Spring	1
2	6-72016-105	Fork arm	1
3	6-72016-112	Block	1
4	GB6181-86	Slot nut M10	1
5	GB91-86	Split pin 2 × 20	1
6	GB9872.1-88	Born frame oil sealing (F) B20 × 35 × 7D	1
7	6-72.016.06	Welded parts of flexible shaft fixed frame	1
8	6-72016-106	Dust proof cover	1
9	6-72016-104	Bearing stand	1
10	6-72016-109	Oil filling plug	1
11	6-72016-102	Paper gasket (II)	1
12	GB276-94	Rolling bearing 6104	1
13	6-72016-108	Teeth clutch	1
14	6-72016-107	Input shaft	1
15	6-72016-101	Paper gasket (I)	1
16	6-72016-110	Active chain	1
17	6-72016-111	Sheath gasket	1
18	GB1243.1-83	Chain 10A-1 × 64	1
19	GB276-94	Rolling bearing 6204	1
20	GB6177-86	Nut M6	1
21	GB9877.1-88	Born frame oil sealing (F) B20 × 40 × 7D	27
22	GB894.2-86	Retainer 20	1
23	6-72.036.04	Welded parts of right housing	1
24	GB6177-86	Nut M10	3
25	6-72.016.07	Welded parts of knife	1
26	6-72.016.01	Welded parts of plough knife shaft	1
27	GB276-94	Rolling bearing 6206	2
28	GB5787-86	Bolt M10 × 15	3
29	GB5787-86	Bolt M6 × 20	3
30	GB893.1-86	Retainer 62	2
31	6-72016.02	Assemble of oil sealing	2
32	GB5787-86	Bolt M6 × 15	19
33	6-72016.03	Welded parts of left housing	1
34	6-72016.05	Welded parts of fork	1
35	GB3452.1-92	O-seal ring 6.9 × 1.8G	1



3. Unit of land wheel 6-80-001



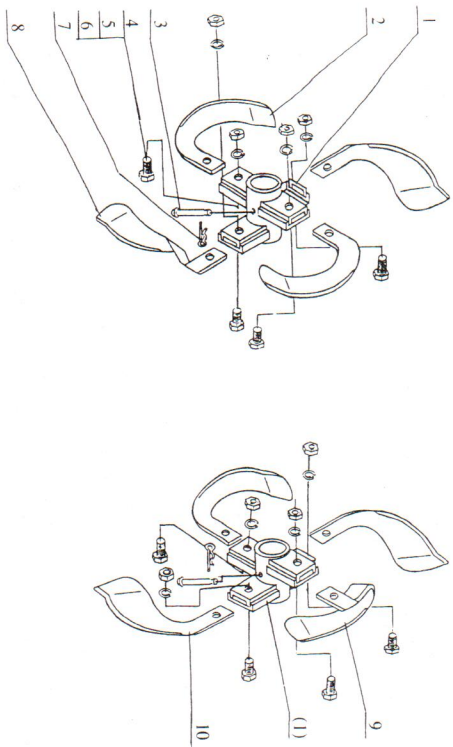
No. code	Name	quantity
1 GB91-86	Split pin 2.5 x 30	2
2 6-80.106	Washer	4
3 6-80.012	Welded parts of land wheel	2
4 6-80.011	Welded parts of land wheel frame	1



(3) Assemble parts of fixed fender 6-72012
 Assemble parts of back rubble fender 6-72022

No. code	Name	quantity
1	GB6177-86 Hexagram nut M6	18
2	6-72012-109 Press plate (II)	2
3	6-72012-110 Front plastic fender	2
4	GB5787-86 Bolt M6 × 12	18
5	6.72.012-01 Welded parts of left movable sub-plate	1
6	6-72012.02 Welded parts of left movable main plate	1
7	6-72022.02 Welded parts of right movable main plate	1
8	6-72022.01 Welded parts of right movable sub-plate	1
9	GB879-86 Spring cylinder pin 2 × 20	2
10	6-72022-101 Back plastic fender	2
11	GB6170.86 Nut	2
12	6-72012-107 Sheath	2
13	6-72012-103 Spring	2
14	6-72012-104 Link shaft	2
15	6-72012-106 Supporting plate	2
16	6-72012-105 Limit plate	2
17	6-72012-107 Press plate (I)	2

4. Unit of knife of rotary cultivation for left and right ditching 6-81.001



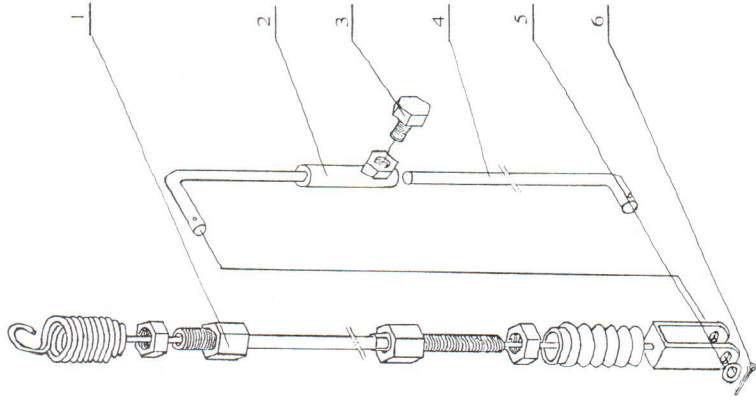
No. code	Name	quantity
1	6-81.051 Welded parts of sheath for knife seat	2
2	6-81.001-104 Left knife (I)	3
3	6-81.001-102 Pin shaft	2
4	GB5783-86 Bolt M10 × 20	8
5	GB6170-86 Nut M10	8
6	GB93-87 Washer 10	8
7	6-81.001-103 Elastic split pin	2
8	6-81.001-101 Left knife (II)	1
9	6-81.001-101 Right knife (II)	1
10	6-81.002.102 Right (I)	3

5. Unit of plough with grid 6-88.001

No.	code	Name	quantity
1	6-88.018	Welded parts of pendulum shaft for amplitude modulation	1
2	6-88.019	Welded parts of hanging and connecting under grid	1
3	GB819-85	Phillips screw M6 × 22	4
4	GB6170-86	Nut M6	4
5	GB93-87	Washer 6	4
6	6-88.017	Riveted parts of plough	1
7	GB5781-86	Bolt M12 × 65	2
8	6-88.101	Spring	2
9	6-88.011	Welded parts of hanging and connecting frame	1
10	6-88.102	Elastic split pin	5
11	6-88.103	Vertical beam pin	4
12	6-88.026	Welded parts of right vertical beam	1
13	6-88.012	Welded parts of left vertical beam	1
14	6-88.113	Semi-rounded cylinder pin	1
15	GB91-86	Split pin 2 × 20	2
16	6-88.112	Press torsion spring	1
17	6-88.025	welded parts of position adjusting for side cultivation	1
18	6-88.110	pin	1
19	6-88.024	Welded parts of fixed position for side cultivation	1
20	GB95-85	Washer 10	1
21	GB6180-86	Hexagram slot nut M10	1
22	6-88.023	Welded parts of screw for depth of cultivation	2
23	6-88.021	Welded parts of plough post	1
24	6-88.022	Welded parts of handle lever for amplitude modulation	1
25	GB5781-86	Bolt M8 × 15	2
26	GB6170-86	Nut M8	4
27	GB93-87	Washer 8	4
28	6-88.109	Limit plate of amplitude modulation	1
29	GB6170-86	Nut M12	1
30	GB93-87	Washer 12	1
31	6-88.107	Press block of plough	1
32	GB119-86	Cylinder pin 8 × 40	1
33	6-88.020	Assemble of back impact for plough	1
34	6-88.013	Welded parts of right grid adjusting arm	1
35	6-88.105	Elastic split pin	4
36	6-88.014	Welded parts of left grid adjusting arm	1
37	6-88.106	Movable plate of grid adjusting	1
38	6-88.104	Upper connecting plate of grid	1
39	6-88.015	Welded parts of grid	4
40	6-88.016	Welded parts of middle grid	1

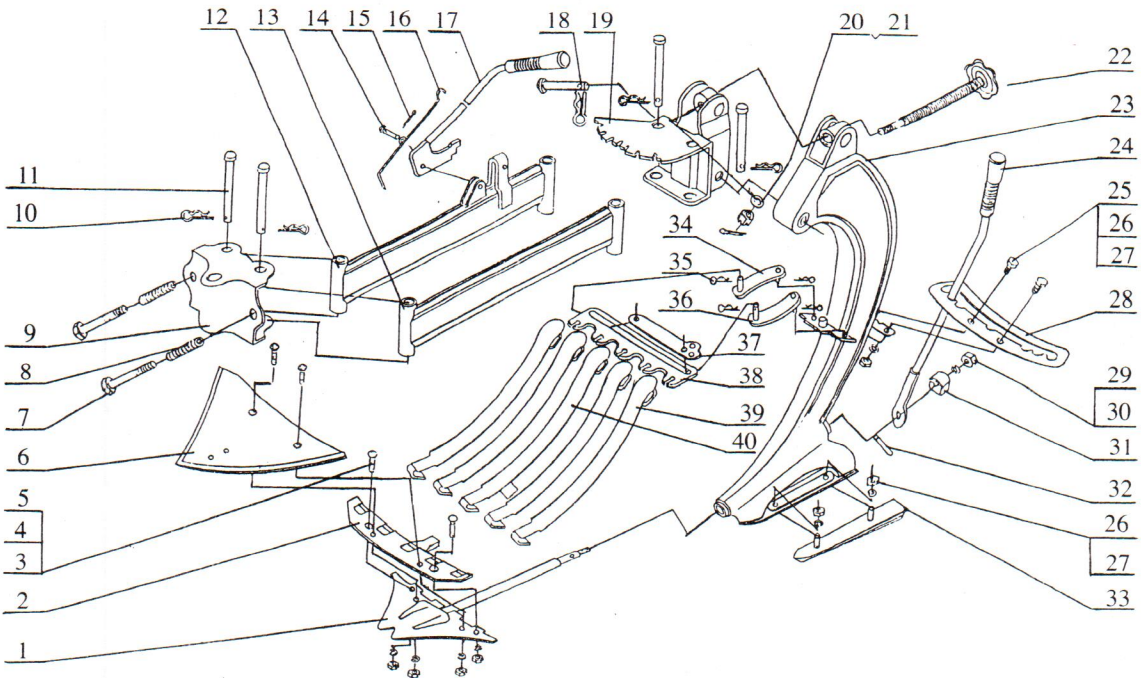
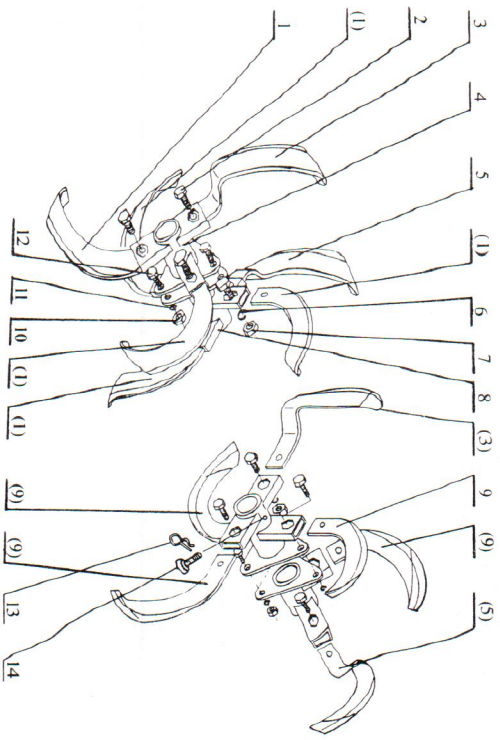
(2) Assemble parts of flexible shaft for rotary cultivation tractor 6-72015

No. code	Name	quantity	
1	6-72.015-01	Assemble of flexible shaft and pipe for rotary cultivation tractor	1
2	6-72.015.02	Welded parts of short pull lever	1
3	GB5783-86	Bolt M6 × 10	1
4	6-72015-101	Long pull lever	1
5	GB97.1-86	Washer 6	1
6	GB91-86	Split pin 2 × 16	1



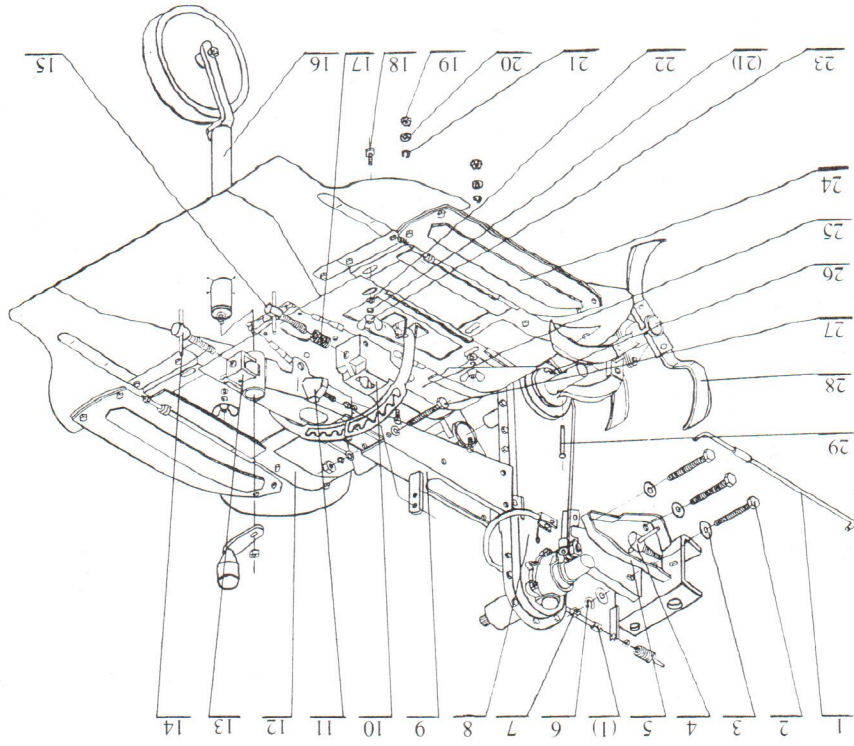
(1) Assemble parts of knife for left and right rotary cultivation 6-72011

No. code	Name	quantity
1	6-72011-104 Left knife	5
2	GB5783-86 Bolt M10 × 20	14
3	6-72011-105 Band Knife (II)	2
4	6-72011-01 Welded parts of sub-sheath for rotary cultivation	2
5	6-72011-103 Band Knife (I)	2
6	GB93-87 Washer 10	14
7	GB6170-86 Nut M10	14
8	6-72011-02 Welded parts of main sleeve for rotary cultivation knife	2
9	6-72011-101 Right knife	5
10	GB6170-86 Nut M8	6
11	GB93-87 Washer 8	6
12	GB5783-86 Bolt M8 × 20	6
13	6.72.011-102 Elastic split pin	4
14	GB882-86 Shaft pin B10 × 45	4



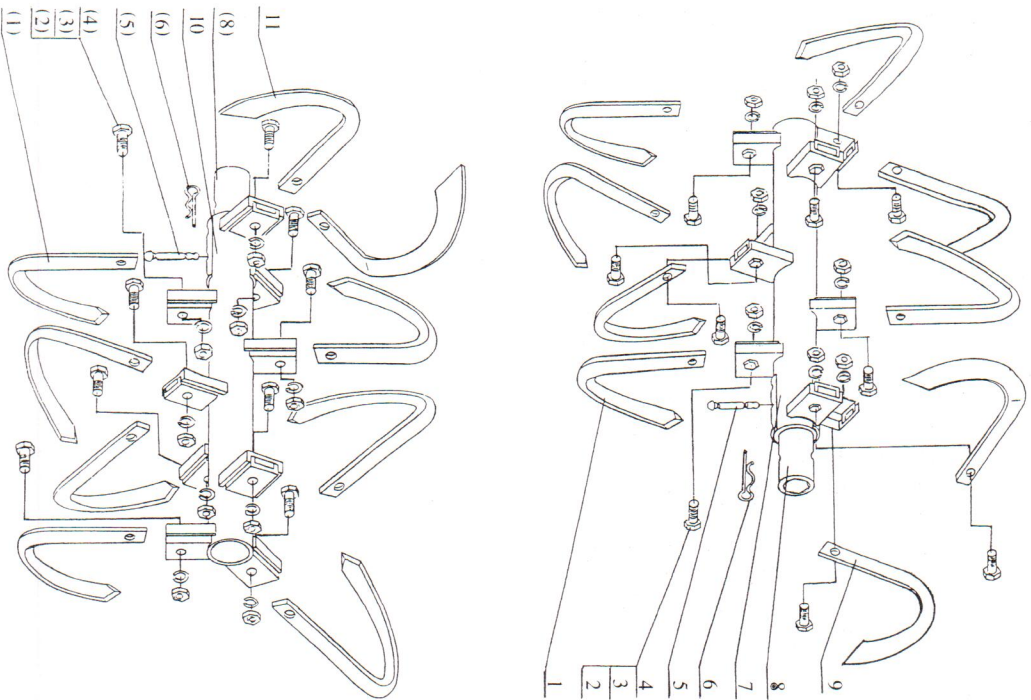
6. Unit of plough for deep rotary cultivation 6-76001

No. code	Name	quantity	
1	6-76.101	Bend knife for straight channel	16
2	GB5783-86	Bolt M10 × 25	18
3	GB6170-86	Nut M10	18
4	GB93-87	Elastic washer 10	18
5	6-76.102	Semi-rounded pin	2
6	6-76.103	Elastic split pin	2
7	6-72.104	Welded parts of seat for left knife	1
8	6-76.104	Inner sheath	2
9	6-76.105	Left side bend knife	1
10	6-76.012	Welded parts of seat for right knife	1
11	6-76.106	Right side bend knife	1



8. Unit of rotary cultivation tractor 6-72001

No. code	Name	quantity
1	6-72015 Assemble of flexible shaft for rotary cultivation tractor	1
2	GB5780-86 Bolt M10 × 85	3
3	GB97.1-85 Washer 10	10
4	6-72013.02 Assemble of screw locking	1
5	6-72013 Welded parts of hanging and connecting frame	1
6	GB93-87 Washer 10	5
7	GB6170-86 Nut M10	5
8	6-72016 Assemble of gearbox for rotary cultivation tractor	1
9	6-72014 Welded parts of main beam	1
10	6-72101 Fixed seat	1
11	6-72017 Assemble of knob	1
12	6-72022 Assemble of right movable fender	1
13	6-72018 Welded parts of tail wheel frame	1
14	6-72020 Assemble of screw locking (III)	2
15	6-72019 Assemble of screw locking (II)	1
16	6-33001 Unit of tail wheel	1
17	6.72-102 Spring	1
18	GB5783-86 Bolt M 8 × 20	4
19	GB6170-86 Nut M8	4
20	GB97.1-86 Washer 8	4
21	GB93-87 Washer 8	8
22	GB97.1-86 Washer 8	4
23	GB62-88 Butterfly nut M8	4
24	6-72012 Assemble of left movable fender	1
25	6-72021 Assemble of fixed fender	1
26	6-72011-102 Elastic slit pin	4
27	GB5780-86 Bolt M10 × 75	2
28	6-72011 Assemble of left and right rotary cultivation knife	1
29	GB882-86 Shaft pin B10 × 45	4



7. Unit of hoe with hexagram cylinder for rotary cultivation 6-72A.001

No. code	Name	quantity
1	GB5783-86 Bolt M10 × 25	8
2	GB6170-87 Nut M10	8
3	GB93-87 Spring washer 10	8
4	6-72A.101 Left knife	9
5	6-72A.011 Welded parts of knife shaft for left rotary cultivation	1
6	6-72A.102 Pin	2
7	6-72A.103 Elastic split pin	2
8	6-72A.115 Right knife	9
9	6-72A.012 Welded parts of knife shaft for left rotary cultivation	1

