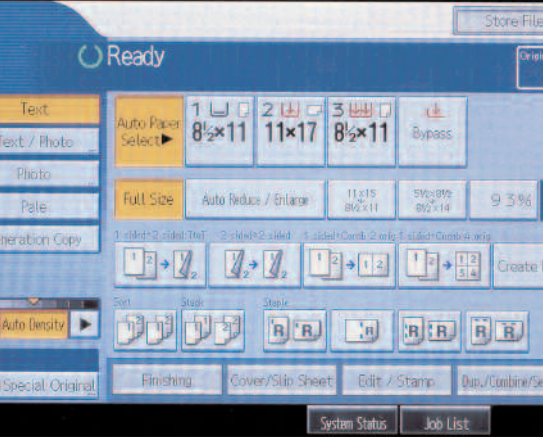


Ricoh Aficio MP 2550B/MP 2550 & MP 3350B/MP 3350
Digital Imaging System
Document Management for the Next Generation.

RICOH

create



color scan



manage



Ricoh Aficio MP 2550B/MP 2550 & MP 3350B/MP 3350

The All-In-One Solution for Office Productivity

Every office is unique. Yet all have the same overriding pressures: raise productivity, complete projects faster, improve quality and encourage collaboration. That's why the RICOH® Aficio® MP 2550B/MP 2550 & MP 3350B/MP 3350 is such a compelling office solution. It's engineered with all the speed, quality, finishing capabilities and easy usability you need to help accomplish the universal objectives of your office. These systems also streamline document distribution with the color/black & white scanning capabilities of the Ricoh Aficio MP 2550 & MP 3350, and the black & white scanning capabilities of the MP 2550B & MP 3350B.



Exceptional Efficient Resourceful Secure

Powerful Productivity

Getting your office up to speed in today's global marketplace means stepping up your delivery on a wide range of variables. The Ricoh Aficio MP 2550B/MP 2550 & MP 3350B/MP 3350 is designed to help you get there.

- Boost your productivity with up to 33 prints per minute.
- Scan your documents and enter the world of cost-free electronic document storage and distribution.
- Expand your faxing capabilities while greatly reducing faxing time with up to three Super G3 fax lines.
- Give your documents the right finishing touch with three different finishing options—including a 1,000-Sheet Booklet Finisher—all designed to make you and your work look better than ever.
- The Ricoh Aficio MP 2550B/MP 2550 & MP 3350B/MP 3350 can store up to 3,000 frequently used documents in its Document Server, where they can be instantly accessed for reprinting, re-faxing or re-scanning.
- Special design features provide easy access for every authorized user, such as the simplified color display, easy-access paper tray handles and animated guidance.

The Intelligent Approach to Networking

To say the Ricoh Aficio MP 2550B/MP 2550 & MP 3350B/MP 3350 is an "intelligent" system sounds cliché, until you see just how smart it is at helping you accomplish your objectives.

- Prioritize your job list by automatically moving the most critical jobs to the head of the print queue, making sure they're finished first.
- Choose the capabilities you need—from economical Refined Print Command Stream (RPCS), PCL or sophisticated Adobe® PostScript® 3™—to handle exactly the type of documents you have.
- Reduce network traffic with PDF Direct Print by sending PDF files directly to the printer without opening Adobe® Acrobat™ Software.

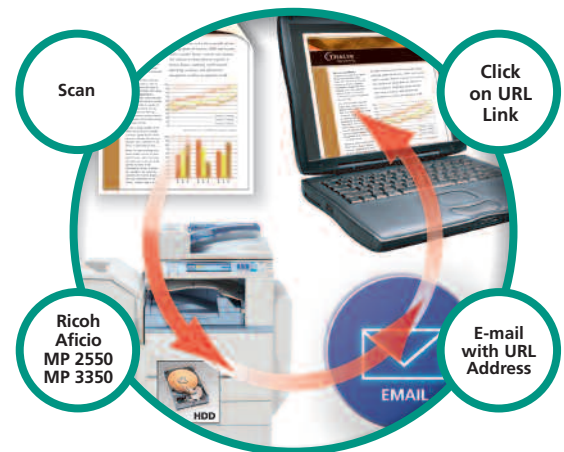
Experience the Benefits of Cost-Free Document Distribution

The Ricoh Aficio MP 2550B/MP 2550 & MP 3350B/MP 3350 gives you the power to capture important documents and distribute them anywhere in the world.

- Scan and capture documents and reports with the color/black & white scanning capabilities of the Ricoh Aficio MP 2550/MP 3350 and the black & white scanning capabilities of the MP 2550B/MP 3350B, and then share them cost-free using the powerful Scan-to-Email/Folder/Hard Disk Drive features.
- Reduce programming time and make more efficient use of company information by accessing up to five LDAP servers.
- Improve productivity and accuracy by viewing full-color thumbnails on the control panel and confirming that scanned documents were captured correctly before you distribute them.
- Use High Compression PDF to dramatically reduce the file sizes on color documents—alleviating the problem of large documents moving over your network—while still producing high quality prints.
- Reduce network traffic with Scan-to-URL, which allows you to store documents on the Hard Disk Drive, where they can be viewed and downloaded with a Web browser.



LAN Fax allows you to fax documents right from your desktop, maximizing convenience and boosting efficiency.



Color scanning combined with Scan-to-URL improves project collaboration and reduces network traffic. (Color scanning is not available on the MP 2550B/MP 3350B models.)



With Ricoh RPCS, you can simplify complex jobs to one-click operations. For example, you can program the driver to automatically duplex, three-hole punch, and insert a front and back cover on a document—and then print the program with a single button.

CopyPrintScanFaxFinish

Powerful, Next-Generation Faxing

Sending and receiving faxes have never been easier, faster or more convenient than with the Ricoh Aficio MP 2550B/MP 2550 & MP 3350B/MP 3350.

- The Super G3 modem allows you to send out documents on up to three analog lines, boosting your fax capabilities and reducing faxing time significantly.
- Internet Fax lets you send scanned documents directly to e-mail addresses, eliminating both phone charges and wasted paper.
- Go completely paperless by automatically forwarding inbound faxes to e-mail addresses, network folders or for storage on the systems' Hard Disk Drive.

Keep Your Work Secure

The Ricoh Aficio MP 2550B/MP 2550 & MP 3350B/MP 3350 is designed to be an integral part of a total system of document security.

- Restrict access to the system only to people who are authorized and have a password. You can also restrict usage rights by application; for example, you can restrict scanning or faxing to authorized personnel only.
- Using Locked Print, you can protect your confidential documents from being seen or accidentally picked up in the output tray by unauthorized users—eliminating costly mail boxes.
- For the highest security requirements, you can use the DataOverwriteSecurity System (DOSS) to prevent the possibility of reconstructing data from “latent images” of documents left in the internal hard drive.
- Use Unauthorized Copy Control to deter copying of sensitive documents—a necessity for workgroups creating and distributing confidential information.

Simplified Management

The Ricoh Aficio MP 2550B/MP 2550 & MP 3350B/MP 3350 can turn your computer into a control center for everything from system management and device monitoring to troubleshooting.

- Get instant access to system settings, program address books, and much more with Web Image Monitor.
- Efficiently configure, monitor and manage multiple connected Ricoh devices with Web SmartDeviceMonitor.
- Rely on Auto E-mail Notification to generate an alert when the system is low on toner or otherwise not functioning at optimum performance levels.

Technology to Empower Your Business

At Ricoh, we're committed to helping you achieve your goals for reducing overall Total Cost of Ownership, optimizing fleet management and ultimately increasing employee productivity.

- Automating service call procedures, eliminating the need for end-users to initiate service calls. If a service call is required, the @Remote network appliance automatically places a request for service—including detailed and accurate diagnostic information.
- Upgrading and adjusting your devices via remote firmware applications, which means that your devices will always be functioning within the most current and productive operational parameters.
- To ensure that your devices are constantly up and running, alerts can be sent, such as a low toner warning.



Your Environmental Partner



Ricoh continues its long-standing commitment to developing office solutions with environmentally friendly and superior energy- and supply-saving features, including:

- Quick Start-Up (QSU) Technology
- Power-Saving Sleep Mode
- Duplex and Combine Copy Modes
- Internal Toner Recycling Mechanism
- Low Noise Levels
- Minimal Ozone Emissions
- Restriction of Hazardous Substances (RoHS) Compliant

Reach New Levels of Office Productivity

One-Bin Tray (Optional)

Provides a cost-effective option to separate output generated from two different system functions, such as faxes and prints.

1,000-Sheet Booklet Finisher (Optional)

Provides three destinations for output, including the ability to produce paginated, saddle-stitched, punched and folded booklets, greatly expanding your in-house capabilities.

1,000-Sheet or 500-Sheet Finisher also available

2 x 500-Sheet Paper Trays (Standard)

User-adjustable paper trays hold envelopes, plus a range of paper sizes up to 11" x 17" and weights up to 42 lb. Bond.

2 x 500-Sheet Paper Trays (Optional)

Adjustable paper bank increases paper capacity to hold up to five different sizes and orientations of paper, reducing maintenance requirements.

2,000-Sheet Large Capacity Tray also available

50-Sheet Automatic Reversing Document Feeder (ARDF) (Optional)

Efficiently processes multi-page originals, even mixed sizes up to 11" x 17".

Color Control Panel

Full-color VGA display with the simplified display feature makes using the system easy and accessible for everyone.

100-Sheet Bypass Tray

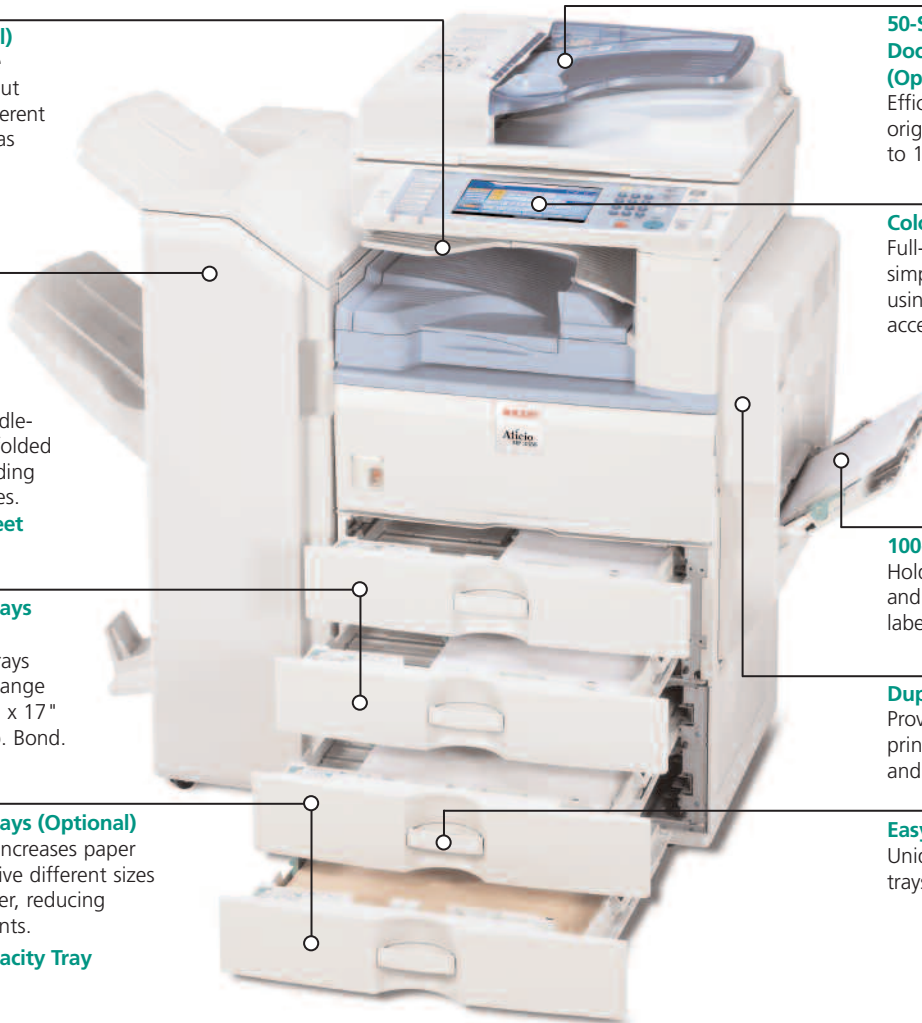
Holds a variety of paper types and sizes for printing envelopes, labels and transparencies.

Duplex Unit

Provides stackless, two-sided printing—cutting paper, filing and postage costs in half.

Easy-Access Tray Handles

Unique design makes accessing trays fast and simple for everyone.



Choose the Configuration that Best Meets Your Office Requirements.

MP 2550B/MP 3350B



Copy

For robust copying and a flexible upgrade path to black & white scanning, printing and faxing.

MP 2550SP/MP 3350SP



Copy/Scan/Print

For exceptional black & white printing and color and black & white scanning.

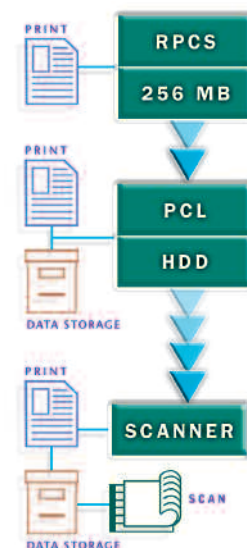
MP 2550SPF/MP 3350SPF



Copy/Scan/Print/Fax

For a complete document management system with printing, faxing, color and black & white scanning in a single, compact device.

Flexible Upgrade Path (MP 2550B/MP 3350B)



For a low-cost network printer, where a specific printer language is not required, start with Ricoh's RPCS printer unit.

For the next step up, add the Printer Enhance and get PCL Printing and document storage capabilities.

For a device that can send cost-free documents electronically anywhere in the world, simply add the Scanner Enhance for black & white scanning.

For an all-inclusive solution, a Printer/Scanner Kit is also available.

Ricoh Aficio MP 2550B/MP 2550 & MP 3350B/MP 3350 Series Specifications

Engine/Copier Specifications

Configuration	Console
Scanning Element	Flatbed with Moving CCD Array Image Sensor
Printing Process	Single Laser Beam Scanning & Electrophotographic Printing
Document Feeding	Optional 50-Sheet ARDF
Toner	Dry, Dual Component
System Memory (std./max.)	MP 2550B/MP 3350B: 256/512 MB RAM
Hard Disk Drive	MP 2550/MP 3350: 40 GB standard MP 2550B/MP 3350B: 40 GB optional
Copy Resolution	600 x 600 dpi
Grayscale	256 levels
Exposure Adjustment	Manual & Automatic
Quantity Indicator	Up to 999
Original Type	Book/Sheet
Maximum Original Size	Up to 11" x 17"
Copy Size	5.5" x 8.5" to 11" x 17"
Copy Type	Plain Paper, Transparencies, Envelopes, Cardstock, Recycled
Warm-Up Time	14 seconds
First Copy Speed	4.5 seconds
Continuous Copying Speed	MP 2550B/MP 2550: 25 copies/ minute (LTR) MP 3350B/MP 3350: 33 copies/ minute (LTR)
Recovery Time	10 seconds (from Auto Off)
Power Source	120V/60Hz
Dimensions	24.8"(W) x 25.7"(D) x 27.9"(H)
Weight	143 lbs.
Standard Paper Capacity	500 sheets x 2 trays, and 100-Sheet Bypass Tray
Optional Paper Capacity	500 sheets x 2 trays or 2,000-Sheet Large Capacity Tray
Paper Size	5.5" x 8.5" to 11" x 17" A5 to A3
Paper Weight	16 – 28 lb. Bond/60 – 105g/m ² (Tray 1 and Duplex) 14 – 42 lb. Bond/52 – 157g/m ² (Tray 2 and Bypass)
Standard Output Tray Capacity	500 sheets (Letter) 250 sheets (Legal, Ledger)
Reduction Ratios	25%, 50%, 65%, 73%, 78%, 85%, 93%, 100%
Enlargement Ratios	121%, 129%, 155%, 200%, 400%
Zoom	25% to 400% in 1% increments
Standard Features	Auto Magnification, Auto Paper Select, Auto Tray Switch, Center/Border Erase, Chapters, Full-Color VGA Touch Screen Control Panel, Combine Mode, Cover Insertion, Date Stamp, Directional Magnification, Electronic/Rotate Sorting, English Pre-Set Stamps, Negative/ Positive, OHP Slip Sheet, Page Number Stamp, 10 Job Programs, 500 User Codes
Requires Hard Disk Drive	8 Job Presets, Background Numbering, Booklet/Magazine Copy, Document Server (3,000 file capacity), Series Copy, User Stamps

Printer Specifications (Standard)*

Print Speed	MP 2550B/MP 2550: 25 ppm MP 3350B/MP 3350: 33 ppm
CPU	RM7035C 533 MHz
Standard Interfaces	10/100BaseTX Ethernet, USB 2.0
Optional Interfaces	IEEE 802.11a/b/g Wireless LAN, Bluetooth, IEEE 1284, Gigabit Ethernet
Memory Capacity	Shared with Copier
Network Protocol	TCP/IP, IPX/SPX, AppleTalk
Network Operating Systems	Windows Vista/2000/ME/XP/Server 2003, Netware 3.12, 3.2, 4.1, 4.11, 5.0, 5.1, 6.0, 6.5, Unix; Sun Solaris, HP-UX, SCO OpenServer, Red Hat Linux, IBM AIX, Mac OS 8.6 - 9.2x, OS X 10.1 or later, SAP R/3, NDS Gateway, IBM iSeries/AS/ 400® using OS/400 Host Print Transform, Citrix Metaframe

Utilities	SmartDeviceMonitor, Web SmartDeviceMonitor, DeskTopBinder, Web Image Monitor
Page Description Languages	PCL 5e/6 emulation, Ricoh RPCS, Adobe PostScript 3 (optional)
Print Resolution	Up to 600 dpi (2400 x 600 dpi with smoothing)
Grayscale	256 levels
Fonts for PCL 5e/6	35 Intellifonts, 10 TrueType, 1 Bitmap and 13 International Fonts
Fonts for PS3	136 PostScript Fonts
Standard Features (Hard Drive Required)	Sample/Locked/Hold/Stored Print
Scanner Specifications (Standard)*	
Scanning Speed	Embedded Scanning: 50/29 ipm (@ 200 dpi)
B&W/Color	600 dpi
Scanning Resolution	600 dpi
Grayscale	256 levels
Scan Area	Up to 11" x 17"
Standard Interfaces	10/100BaseTX Ethernet
Optional Interfaces	IEEE 802.11a/b/g Wireless LAN, Gigabit Ethernet
Protocol	TCP/IP, NCP, SMB, SMTP, POP 3, LDAP, FTP
Memory Capacity	Shared with Copier
File Types	Single and multi-page TIFF/PDF, High Compression PDF, Single-page JPEG
Standard Features	Embedded Scan-to-Email/HDD/Folder/ URL and TWAIN

Note: Color Scanning, Color Dropout and High Compression PDF are not available on the MP 2550B/MP 3350B models.

Fax Specifications (Option)

Circuit	PSTN, PBX
Compatibility	ITU-T G3
Resolution	200 x 200/100 dpi 400 x 400 dpi (Optional)
Compression Method	MH, MR, MMR, JBIG
Scanning Speed	0.40 seconds (LEF)
Modem Speed	33.6 Kbps with Auto Fallback
Transmission Speed	G3: 3 seconds per page (MMR Compression) G3: 2 seconds per page (JBIG Compression)
Memory	4 MB standard/28 MB maximum 320 pages/2,240 pages 2,000 (with HDD)
Std/Max Auto Dials	100 (max. 500 numbers per group)
Group Dials	
ID Code Programming	4 digits
User Function Key	3 keys
Standard Features	Book Transmission, Dual Access, Duplex Reception, Image Rotation, 1 Hour Backup, LAN-Fax Capability*, Internet Faxing (T.37)*, IP Faxing (T.38)*, Fax Forwarding to E-Mail/ HDD/Folder*
Optional Features	Simultaneous Operation of up to 3 lines (G3 x 3)

Note: Fax is standard on the MP 2550SPF/MP 3350SPF models.

Security Features (Standard)*

S/MIME, IPsec Communication, Locked Print Password Encryption, Encrypt Address Book, SSL Secure Socket Layer, User Authentication, SNMP v3, Encryption of Password PDF, Encrypted PDF

PB3030 Paper Bank Unit (Option)

Paper Size	5.5" x 8.5" to 11" x 17" A5 to A3
Paper Weight	16 to 28 lb. Bond/60 to 105g/m ²
Paper Capacity	2 x 500 sheets
Dimensions	21.7"(W) x 20.5"(D) x 10.7"(H)

PS500 Large Capacity Tray (Option)

Paper Size	8.5" x 11"/A4
Paper Weight	16 to 28 lb. Bond/60 to 105g/m ²
Paper Capacity	2,000 sheets x 1
Dimensions	21.7"(W) x 20.5"(D) x 10.7"(H)

One-Bin Tray BN3030 (Option)

Paper Size	5.5" x 8.5" to 11" x 17"/A5 to A3
Paper Weight	16 to 28 lb. Bond/60 to 105g/m ²
Paper Capacity	125 sheets

SR3050 500-Sheet Finisher (Option)

Paper Size	5.5" x 8.5" to 11" x 17"/A6 to A3
Paper Weight	14 to 42 lb. Bond/52 to 157g/m ²
Stack Capacity	Shift Tray: 500 sheets (8.5" x 11" or smaller) 250 sheets (8.5" x 14" or larger)
Staple Capacity	50 sheets (8.5" x 11") 30 sheets (8.5" x 14" or larger)
Staple Position	1 staple/4 positions; 2 staples/1 position
Dimensions	15.6"(W) x 21.7"(D) x 10.9"(H)

SR790 1,000-Sheet Finisher (Option)

Paper Size	5.5" x 8.5" to 11" x 17"/A6 to A3
Paper Weight	14 to 42 lb. Bond/52 to 260g/m ²
Stack Capacity	Proof Tray: 250 sheets (8.5" x 11" or smaller) 50 sheets (8.5" x 14" or larger) Shift Tray: 1,000 sheets (8.5" x 11" or smaller) 500 sheets (8.5" x 14" or larger)
Staple Capacity	50 sheets (8.5" x 11") 30 sheets (8.5" x 14" or larger)
Staple Position	1 staple/2 positions; 2 staples/1 position
Dimensions	10.7"(W) x 20.5"(D) x 31.2"(H)

SR3000 Booklet Finisher (Option)

Paper Size	5.5" x 8.5" to 11" x 17"/A6 to A3
Paper Weight	14 to 28 lb. Bond/52 to 105g/m ² (Proof Tray); 14 to 68 lb. Bond/ 52 to 256g/m ² (Shift Tray)
Stack Capacity	Proof Tray: 100 sheets (8.5" x 11" or smaller) 50 sheets (8.5" x 14" or larger) Shift Tray: 1,000 sheets (8.5" x 11" or smaller) 500 sheets (8.5" x 14" or larger)
Staple Capacity	50 sheets (8.5" x 11") 30 sheets (8.5" x 14" or larger)
Staple Position	1 staple/2 positions; 2 staples/1 position
Dimensions	21.1"(W) x 23.7"(D) x 36.7"(H)
Punch Unit (Option)	2 or 3 hole punch

ARDF DF3030 (Option)

Paper Size	5.5" x 8.5" to 11" x 17"
Paper Weight	11 to 34 lb. Bond/40 to 128g/m ²
Stack Capacity	50 sheets
Dimensions	21.7"(W) x 19.3"(D) x 4.7"(H)

Additional Options for MP 2550B/MP 2550/MP 3350B/MP 3350

Platen Cover Type 3800C, FAC38 Cabinet, Fax Type 3350, G3 Interface Type 3350, 32 MB Fax Memory, Handset Type 1018, IEEE 1284 Interface Board Type A, IEEE 802.11a/b/g Interface Unit Type J, Adobe PostScript 3 Type 3350, Bridge Unit Type BU3020, Internal Shift Sort Tray Type SH3010, Key Counter Bracket Type H, File Format Converter Type E, DataOverwriteSecurity Unit Type I, Copy Data Security Unit Type F, Bluetooth Interface Type 3245, Java VM Card Type F, Punch Kit PU3000, HDD Encryption Type A, Gigabit Ethernet Type A

Additional Options for MP 2550B/MP 3350B Models Only

Hard Disk Drive Type 5000, Printer Enhance Type 3350, Printer/Scanner Unit Type 3350, RPCS Printer Unit Type 3350, Scanner Enhance Type 3350

*Options for Ricoh Aficio MP 2550B/MP 3350B

www.ricoh-usa.com

Ricoh Americas Corporation, Five Dedrick Place, West Caldwell, NJ 07066

Ricoh® and the Ricoh Logo are registered trademarks of Ricoh Company, Ltd. Windows® and Windows® 95/98/Me/NT4.0/2000/XP/Vista are registered trademarks of Microsoft Corporation. Macintosh®, Mac® OS and AppleTalk® are registered trademarks of Apple Computer, Inc. Adobe® and PostScript® are registered trademarks of Adobe Systems, Inc. PCL® is a registered trademark of Hewlett-Packard Company. RPCS™ is a trademark of Ricoh Company, Ltd. All other trademarks are the property of their respective owners. Print speed may be affected by network, application or PC performance. Specifications and external appearances are subject to change without notice. Products are shown with optional features.

Printed in U.S.A. on recycled paper because Ricoh cares.

R2685

