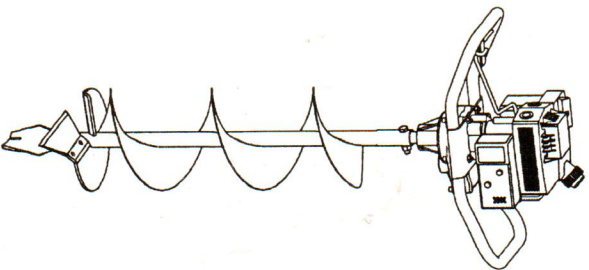
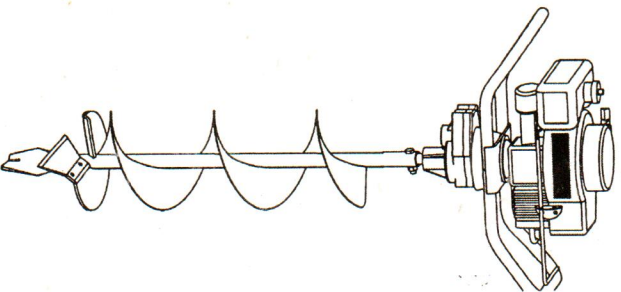


# OPERATOR'S MANUAL

## POWER EARTH AUGER



**Model GD6400**



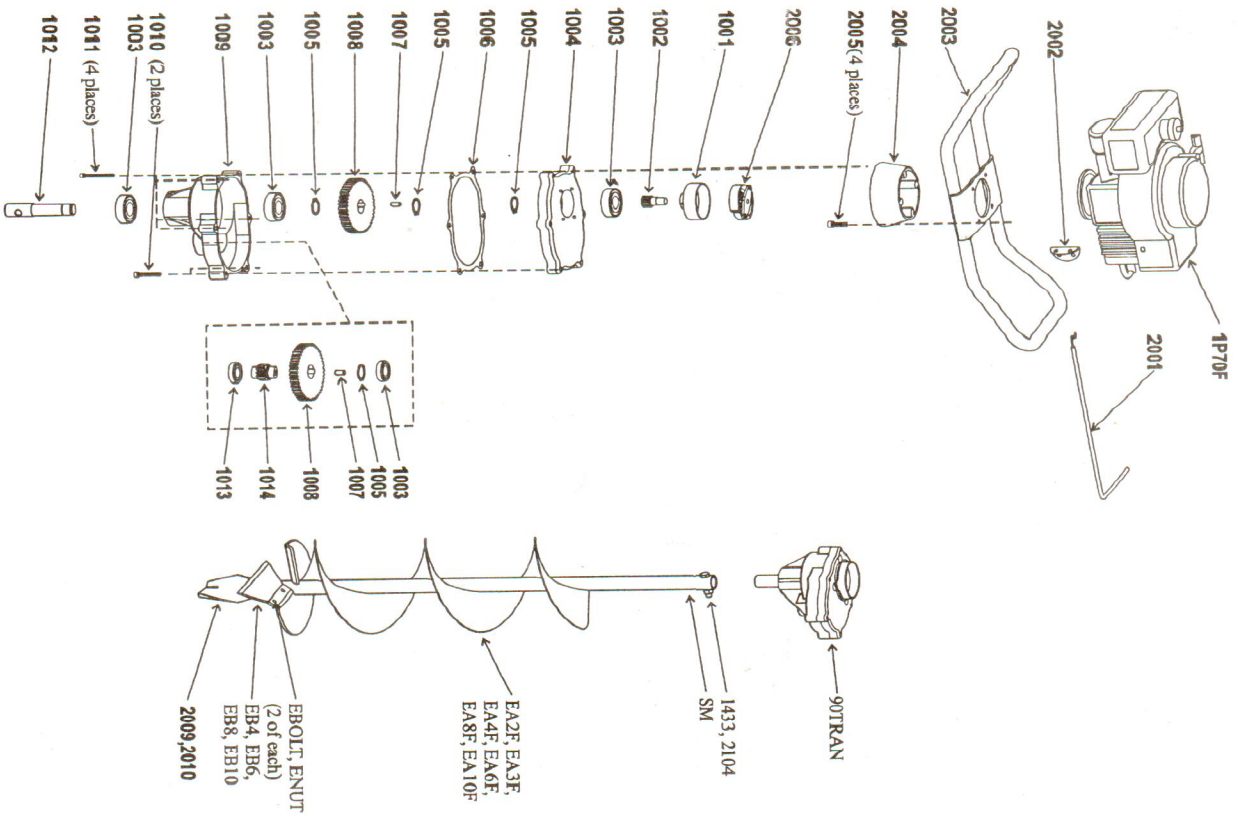
**Model GD6500**

# MODEL GD6500 PARTS LIST

MINIMUM ORDER ..... \$10.00

POWERHEAD PARTS		Qty.	EARTHAUGER PARTS		Qty.
Part #	Description		Part #	Description	
1000	44T Gear	2	2007	Bolt-HHCS, 3/8-16 x 1-1/2" (auger to powerhead)	2
1005	Output Shaft, 7/8"	1	2008	Nut-Hex Locking, 3/8-16	2
1008	Dowel Pin, 1/4" x 1/2", hardened steel	2	2009	Fishtail Point (used on 4" or larger earth auger)	1
1012	Gasket	1	2010	Fishtail Point (used on 2" & 3" earth auger)	1
1013	Ball Bearing	3	EA2F	Earth Auger, 2" w/fishtail point	1
1015	Snap Ring	4	EA3F	Earth Auger, 3" w/fishtail point	1
1005	Bolt-SHCS, 1/4-20 x 1-1/2" (gear case bottom to gear case top)	2	EA4F	Earth Auger, 4" w/fishtail point	1
1010	Bolt-SHCS, 1/4-20 x 2-1/4" (gear case to ring)	4	EA6F	Earth Auger, 6" w/fishtail point	1
1011	Gear Case Bottom	1	EA8F	Earth Auger, 8" w/fishtail point	1
1009	Throttle Control Rod	1	EA10F	Earth Auger, 10" w/fishtail point	1
2001	Twist-Throttle Control Rod	1	EB4	Earth Blade, 4"	1
2002	Handlebar-Framed	1	EB6	Earth Blade, 6"	1
1001	Clutch Drum, 3" Threaded	1		(includes EBOLT & ENUT)	
1002	12T Pinion Gear, Threaded	1	EB6HD	Heavy Duty Earth Blade, 6"	1
2006	Centrifugal Clutch Rotor	1	EB8	Earth Blade, 8"	1
2004	Mount Ring (handlebar to gear case top)	1		(includes EBOLT & ENUT)	
1004	Gear Case Top	1	EB8HD	Heavy Duty Earth Blade, 8"	1
1014	10T Pinion Gear	1		(includes EBOLT & ENUT)	
1P70F	Gas Engine	1	EB10	Earth Blade, 10"	1
				(includes EBOLT & ENUT)	
			EB10HD	Heavy Duty Earth Blade, 10"	1
				(includes EBOLT & ENUT)	
			EBOLT	Bolt-Hex, 1/4-28 x 5/8", Grade 5 (earth blade to auger)	2
			ENUT	Nut-Nyloc, 1/4-28	2
			SM	Shock Mechanism (used on 6" or larger earth auger)	1

# MODEL GD6500 PARTS LIST



# CONTENTS

Safety .....	2
Operation .....	3
Maintenance & Storage .....	4
Troubleshooting, and Repair .....	5-9

# SAFETY

## OWNER'S RESPONSIBILITY

Accurate assembly and safe and effective use of the auger is the owner's responsibility.

1. Read and follow all safety instructions.
2. Carefully follow all assembly instructions.
3. Maintain the auger according to directions and schedule included.
4. Ensure that anyone who uses the auger is familiar with all controls and safety precautions.

## CAUTIONS AND IMPORTANT NOTES

Two symbols which draw attention to information of special interest appear throughout this manual. These comments range in importance from helpful hints to warnings about risk of personal injury. Please take the time to read and understand them.



**CAUTION**  
Indicates a situation which may cause personal injury or damage to the auger or property.



**IMPORTANT**  
Provides helpful information for proper assembly, operation, or maintenance of your auger.

## IMPORTANT SAFETY PRECAUTIONS

Please read this section carefully. Operate the auger according to the safety instructions and recommendations outlined here and inserted throughout the text. Make sure anyone who uses the auger has read the instructions and is familiar with the controls.



This symbol points out important safety instructions which if not followed could endanger your personal safety. Read and follow all instructions in this manual and any others provided with this equipment.

1. Do not carry the auger powerhead between holes with the engine running.
2. The auger should not rotate when the engine is idling. If it does rotate when engine is idling, contact Ardisam, Inc. for instructions.
3. Always keep hands, feet, hair and loose clothing away from any moving parts on engine and auger.
4. Do not allow children to operate this power auger. Do not allow adults to operate the auger without proper instruction.
5. Do not operate any power equipment under the influence of alcohol or drugs.
6. Keep all screws, nuts and bolts tight.
7. Engine should be shut off before any repairs are attempted.
8. Temperature of muffler and nearby areas may exceed 150° F (65° C). Avoid these areas.
9. Never run engine indoors or in enclosed, poorly ventilated areas. Engine exhaust contains carbon monoxide, an odorless and deadly gas.

# MODEL GD6400 PARTS LIST

MINIMUM ORDER ..... \$10.00

### POWERHEAD PARTS

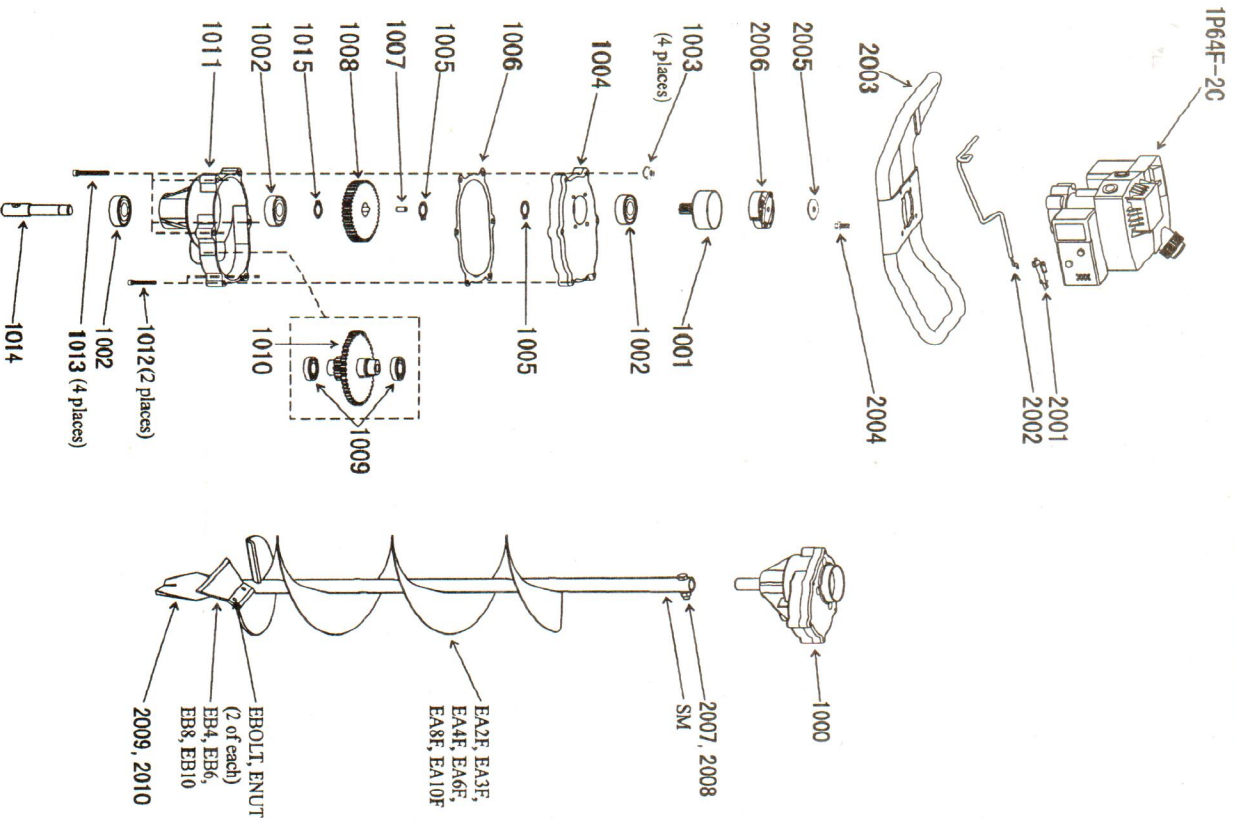
Part #	Description	Qty.
1000	Transmission Complete	1
2002	Throttle Control Rod	1
2001	Throttle Control Engine	1
2003	Handlebar, w/hrottle mounting tab	1
1008	Gear 4:1T	1
1014	Output Shaft, 7/8"	1
1007	Dowel Pin, 1/4" x 1/2", hardened steel	1
1001	Clutch Drum & 7T Pinion Gear	1
2005	Washer, Clutch-Hardened Steel	1
1006	Gasket	1
2006	Rotor, Centrifugal	1
1002	Ball Bearing	3
1009	Ball Bearing	2
1005	Snap Ring	3
1012	Bolt-SHCS, 1/4-20 x 1-1/2" (gear case bottom to gear case top)	2
1013	Bolt-SHCS, 1/4-20 x 1"	4
1003	(gear case to ring)	4
1011	Nut-Hex, 1/4"-20 Keys	1
1010	Gear Case Bottom	1
1004	48T & 10T Pinion Gear Cluster, left hand thread	1
1F64P-2C	Gear Case Top	1
2004	Gas Tank	1
	Bolt-SHCS, 1/4-20 x 3/4" (handlebar plate to engine)	4

### EARTHAUGER PARTS

Part #	Description	Qty.
2007	Bolt-FHCS, 3/8-16 x 1-1/2" (auger to powerhead)	2
2008	Nut-Hex Locking, 3/8-16	2
2009	Fishtail Point	1
	(used on 4" or larger earth auger)	
2010	Fishtail Point	1
	(used on 2" & 3" earth auger)	
8980	Shock Spring	1
EA2F	Earth Auger, 2" w/fishtail point	1
EA3F	Earth Auger, 3" w/fishtail point	1
EA4F	Earth Auger, 4" w/fishtail point	1
EA6F	Earth Auger, 6" w/fishtail point	1
EA8F	Earth Auger, 8" w/fishtail point	1
EA10F	Earth Auger, 10" w/fishtail point	1
EB4	Earth Blade, 4"	1
	(includes EBOLT & ENUT)	
EB6	Earth Blade, 6"	1
	(includes EBOLT & ENUT)	
EB6HD	Heavy Duty Earth Blade, 6"	1
	(includes EBOLT & ENUT)	
EB8	Earth Blade, 8"	1
	(includes EBOLT & ENUT)	
EB8HD	Heavy Duty Earth Blade, 8"	1
	(includes EBOLT & ENUT)	
EB10	Earth Blade, 10"	1
	(includes EBOLT & ENUT)	
EB10HD	Heavy Duty Earth Blade, 10"	1
	(includes EBOLT & ENUT)	
EBOLT	(includes EBOLT & ENUT)	2
	(earth blade to auger)	
ENUT	Nut-Nyloc, 1/4-28	2
SM	Shock Mechanism	1
	(used on 6" or larger earth auger)	



## MODEL GD6400 PARTS LIST



## OPERATION

### SPARK PLUG INSTALLATION

If your powerhead does not have the spark plug already installed for you. You will have to install it following the instructions given below.

1. Locate the spark plug in the parts packet.
2. With powerhead laying on its side, place spark plug in hole on right side of engine.
3. Turn by hand until snug.
4. Use a 3/4" wrench or socket to tighten up.

### OPERATION

#### CAUTION

Please do not start your auger until you have read the Engine Manual that came with your engine, and the section in this manual titled Safety. If you have read these, follow the steps below to start your auger. Always perform this pre-start checklist before starting the engine.

1. Read engine operating manual and follow instructions for fuel type, starting, etc. **BE SURE TO USE PROPER GAS/OIL MIXTURE.**
2. The clutch will transfer maximum power after about two hours of normal operation. During this break-in period clutch slippage may occur. The clutch should be kept free of oil or other moisture for efficient operation.
3. Dig holes without placing excessive body weight on the unit. The auger operates most efficiently with a shaving action caused by the weight of the unit itself.
4. Never run engine indoors. Exhaust fumes are deadly.
5. Do not use an ice auger in earth.
6. The ice auger blade protector should be attached to the auger head when not in use. This will protect the cutting edge of the ice auger blade.

### FUEL MIXTURE

#### CAUTION

Never fill fuel tank indoors. Never add gas when engine is running or hot from operation. Do not smoke when filling fuel tank.

#### IMPORTANT

This engine uses a gas/oil mixture. **DO NOT RUN ENGINE ON STRAIGHT GAS ONLY. ENGINE DAMAGE WILL RESULT!**

1. Mix clean, fresh, lead-free gasoline (minimum of 77 octane) with a high quality 2 cycle engine oil at the ratio of 5 oz. oil to 1 gallon gasoline. (Refer to your engine manual for further information on fuel.)
2. Mix fuel in a 1 or 2 gallon container approved for gasoline.
3. Loosen fuel cap slowly. Rest the cap on a clean surface.
4. Carefully pour fuel into the tank. Avoid spillage.
5. Immediately replace fuel cap and hand tighten. Wipe up any fuel spillage.

### STARTING AND STOPPING

#### CAUTION

Do not hold throttle lever wide open while starting. Loss of control of auger could result.

1. Open gas cap vent if your engine is so equipped (silver steel cap).
  2. Flip the toggle switch to the **on** position.
  3. Move red choke lever to **full choke** position if engine is cold.
  4. Pull recoil starter until engine fires.
  5. Move choke lever to **half choke** position (midway between off and full).
  6. Pull recoil starter until engine runs.
  7. Run engine 30 to 45 seconds at full throttle on **half choke** position until engine warms up.
  8. Move choke lever to **off** position.
- TO STOP:** Flip the toggle switch to the **off** position.

## MAINTENANCE AND STORAGE

### CAUTION

#### To prevent accidental starting:

Engine must be turned off and cool, and spark plug wire must be removed from spark plug before checking and adjusting engine or equipment.

### CAUTION

Temperature of muffler and nearby areas may exceed 150° F (65° C). Avoid these areas.

### CAUTION

Check auger often for loose nuts and bolts. Keep these items tightened.

## MAINTENANCE AND STORAGE SAFETY

1. Always allow muffler to cool before filling fuel tank.
2. When storing for over 1 month, use gas stabilizer in fuel.
3. Keep all screws, nuts, and bolts tight.
4. Close fuel shut-off valve located between gas tank and carburetor.
5. Do not fill gas tank indoors or when engine is running or is hot.
6. The gear case has 4 oz. of grease installed at the factory. It is recommended that once a year the gear case be split and the grease level checked. Add grease only if level of grease is below top of the gears. **DO NOT OVERFILL.**
7. For cold weather operation, store the unit in a cool environment. Transferring the unit from a warm to a cold place can cause the build up of harmful condensation.

## ENGINE MAINTENANCE

### CAUTION

Do not operate auger before reading the engine manual provided in the parts packet.

### IMPORTANT

Engine can overheat and become damaged if debris blocks the cooling fins or recoil housing.

Refer to the engine manual included in your parts packet for information on engine maintenance. Your engine manual provides detailed information and a maintenance schedule for performing the following tasks:

1. Check air cleaner. See engine manual for instructions.
2. Keep engine and parts clean. See engine manual for instructions on cleaning recoil housing area, linkage, springs and controls, muffler area, cooling fins, and spark plug.

## STORAGE

### CAUTION

Do not store auger in an unventilated area where fuel fumes may reach an open flame, spark or pilot light.

### CAUTION

Drain fuel outdoors, away from any ignition sources. Use only approved fuel containers. Be sure engine is cool. Do not smoke.

Follow the steps below to prepare your auger for storage. Read your engine manual for detailed instructions on preparing the engine for storage.

1. Run with gas stabilizer in fuel. Screen in carburetor will glaze shut if gas stabilizer is not used before storage.
2. Drain the fuel tank. Run the engine until it stops.
3. Remove spark plug, pour one-half ounce of clean engine oil into cylinder. Pull starter handle slowly several times to distribute oil. Replace spark plug.
4. Clean entire auger.
5. Store your auger in a clean, dry building that is inaccessible to children.

## SERVICE, TROUBLESHOOTING AND REPAIR

## TROUBLESHOOTING

### CAUTION

Practice safety at all times. Engine must be turned off and allowed to cool, and spark plug wire must be disconnected before attempting any maintenance or repair.

Problem	Possible cause	Remedy/Action
Engine will not start	<ol style="list-style-type: none"> <li>1. Power switch off</li> <li>2. Spark plug wire disconnected</li> </ol>	<ol style="list-style-type: none"> <li>1. Flip switch to on position</li> <li>2. Connect spark plug wire to spark plug</li> </ol>
Engine runs rough, floops during operation	<ol style="list-style-type: none"> <li>1. Dirty air cleaner</li> <li>2. Choke partially engaged</li> <li>3. Carburetor out of adjustment</li> </ol>	<ol style="list-style-type: none"> <li>1. Clean or replace air cleaner</li> <li>2. Turn off choke</li> <li>3. Call factory</li> </ol>
Engine is hard to start	<ol style="list-style-type: none"> <li>1. Stale fuel</li> <li>2. Spark plug wire loose</li> <li>3. Dirty carburetor</li> </ol>	<ol style="list-style-type: none"> <li>1. Drain old fuel and replace with fresh. Use gas stabilizer at end of season</li> <li>2. Make sure spark wire is securely attached to spark plug</li> <li>3. Clean carburetor, use gas stabilizer, new gas can</li> </ol>
Engine misses or lacks power	<ol style="list-style-type: none"> <li>1. Clogged fuel tank</li> <li>2. Clogged air cleaner</li> <li>3. Improper carburetor adjustment</li> <li>4. Spark plug dirty, improper gap, or wrong type</li> </ol>	<ol style="list-style-type: none"> <li>1. Remove and clean</li> <li>2. Clean or replace</li> <li>3. Call factory</li> <li>4. Replace spark plug and adjust gap</li> </ol>
Auger turns at idle	<ol style="list-style-type: none"> <li>1. Idle speed too high</li> <li>2. Broken clutch spring</li> </ol>	<ol style="list-style-type: none"> <li>1. Adjust idle speed lower</li> <li>2. Replace both springs</li> </ol>
Auger turns, but has no power	<ol style="list-style-type: none"> <li>1. Choke on</li> <li>2. Carburetor out of adjustment</li> <li>3. Broken transmission</li> <li>4. Worn clutch shoes</li> <li>5. Worn engine lower seal</li> </ol>	<ol style="list-style-type: none"> <li>1. Turn off choke after engine is running</li> <li>2. Call factory</li> <li>3. Call factory</li> <li>4. Replace clutch shoes and springs</li> <li>5. Call factory</li> </ol>
Auger jumps on ice	<ol style="list-style-type: none"> <li>1. Blades damaged or sharpened incorrectly</li> </ol>	<ol style="list-style-type: none"> <li>1. Buy new blades, or have blades sharpened at factory</li> </ol>
Auger cuts slowly	<ol style="list-style-type: none"> <li>1. Dull blades</li> <li>2. Damaged point</li> </ol>	<ol style="list-style-type: none"> <li>1. Buy new blades, or have blades sharpened at factory</li> <li>2. File point</li> </ol>
Engine runs, then quits	<ol style="list-style-type: none"> <li>1. Gas cap not venting</li> <li>2. Screen in carburetor plugged</li> </ol>	<ol style="list-style-type: none"> <li>1. Check self venting gas cap</li> <li>2. Clean screen, use gas stabilizer, clean gas can</li> </ol>